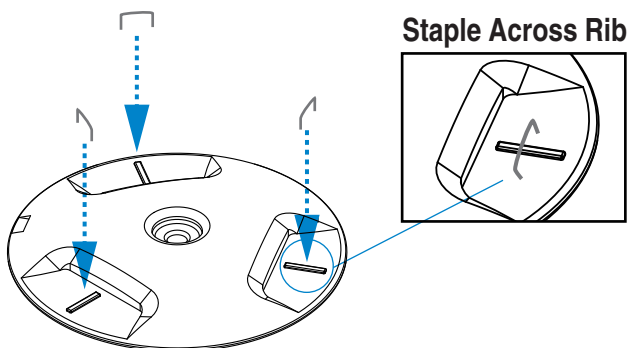
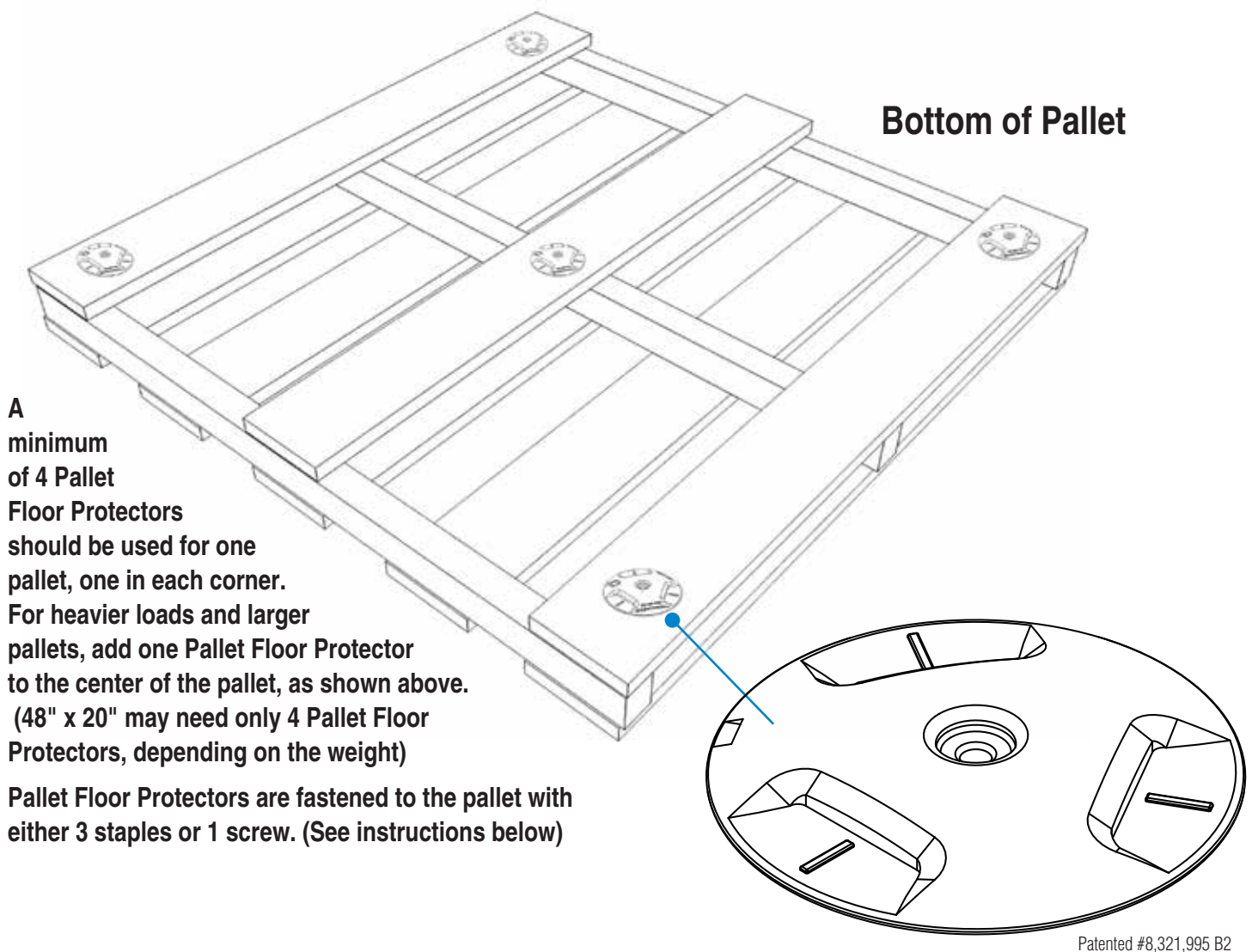
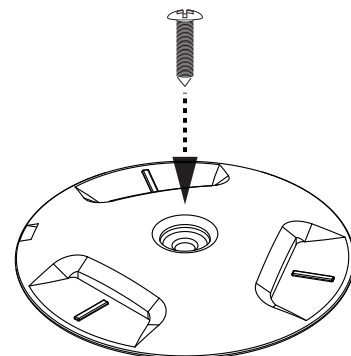


PFP-3 Pallet Floor Protector - Installation



Option 1: Use Three Staples (Pneumatic Stapler)
Staple #6, 9/16" long, heavy duty, wide crown is recommended



Option 2: Use One Screw Flat head wood screw #8, 3/4" long is recommended



BEING GREEN: The PFP-3 extends the life of wooden pallets. Re-using wooden pallets is an eco-friendly decision.



For questions or to order please contact: Stuart Morrison at 800-425-4778 x 211

